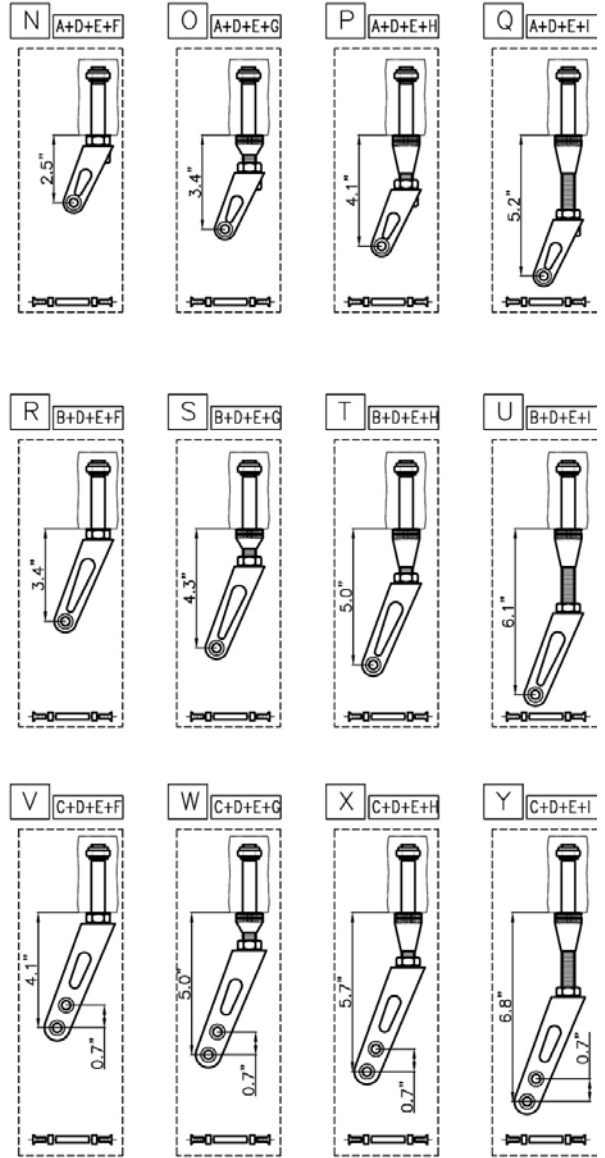
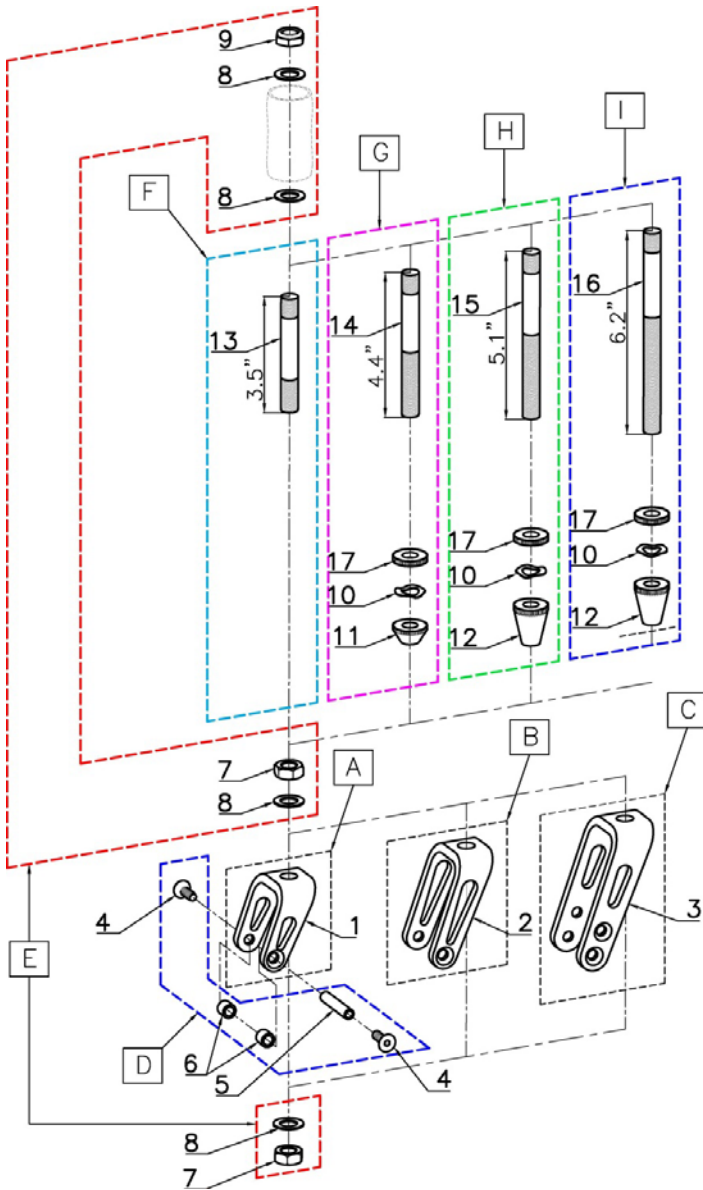


CASTER FORK



POS	Assy #	#	Parts #	QTY	Color	Remark	MSRP	NOTE
A	-	1	0307-400	1	Blk	Short	\$30/1pcs	2pcs/chair
B	-	2	0307-401	1	Blk	Med	\$30/1pcs	2pcs/chair
C	-	3	0307-403	1	Blk	Long	\$32/1pcs	2pcs/chair
D	1400-01D	4	0620-400	2	Sil	1/4"-28 L:3/4 SFHCS	\$10/set	2sets/chair
		5	0605-300	1	Sil	Front Caster Axle		
		6	0257-300	2	Sil	3/8" L:1/4" Spacer		
E	1400-01E	7	0121-300	2	Sil	1/2" -20 HN	\$10/set	2sets/chair
		8	0119-300	4	Sil	1/2" thin Washer		
		9	0260-300	1	Sil	1/2"-20 Nylon HLN		
F	-	13	0408-303	1	-	Short Axle	\$25/1pcs	2pcs/chair
G	1400-01G	17	0122-300	1	Blk	Knurl Nut - Small	\$35/set	2sets/chair
		10	0120-300	1	Sil	1/2" thin Wavy Washer		
		11	0123-400	1	Blk	Knurl Nut - Medium		
		14	0408-300	1	-	Med Axle		
H	1400-01H	17	0122-300	1	Blk	Knurl Nut - Small	\$40/set	2sets/chair
		10	0120-300	1	Sil	1/2" thin Wavy Washer		
		12	0123-300	1	Blk	Knurl Nut - Large		
		15	0408-301	1	-	Long Axle		
I	1400-01I	17	0122-300	1	Blk	Knurl Nut - Small	\$45/set	2sets/chair
		10	0120-300	1	Sil	1/2" thin Wavy Washer		
		12	0123-300	1	Blk	Knurl Nut - Large		
		16	0408-302	1	-	X-Long Axle		

POS	Assy #	#	Parts #	QTY	Color	Remark	MSRP	Note
N	1400-01N	-	-	1set	-	Short Fork & Short Axle	\$70/set	2sets/chair
O	1400-01O	-	-	1set	-	Short Fork & Med Axle	\$75/set	2sets/chair
P	1400-01P	-	-	1set	-	Short Fork & Long Axle	\$80/set	2sets/chair
Q	1400-01Q	-	-	1set	-	Short Fork & X-Long Axle	\$80/set	2sets/chair
R	1400-01R	-	-	1set	-	Med Fork & Short Axle	\$70/set	2sets/chair
S	1400-01S	-	-	1set	-	Med Fork & Med Axle	\$75/set	2sets/chair
T	1400-01T	-	-	1set	-	Med Fork & Long Axle	\$80/set	2sets/chair
U	1400-01U	-	-	1set	-	Med Fork & X-Long Axle	\$80/set	2sets/chair
V	1400-01V	-	-	1set	-	Long Fork & Short Axle	\$70/set	2sets/chair
W	1400-01W	-	-	1set	-	Long Fork & Med Axle	\$75/set	2sets/chair
X	1400-01X	-	-	1set	-	Long Fork & Long Axle	\$80/set	2sets/chair
Y	1400-01Y	-	-	1set	-	Long Fork & X-Long Axle	\$80/set	2sets/chair